

# BALI USV200

## Autonomous bathymetry



### Unparalleled performance on water

Hydrojet propulsion ideal for low depth sounding

Full day operation (2 knots)

100% automated bathymetry



### GEOD® powered

Centimeter RTK or SBAS multiconstellation GNSS

Connected (UHF, GSM, Wifi)

Single Frequency (SF) and Dual Frequency (DF)

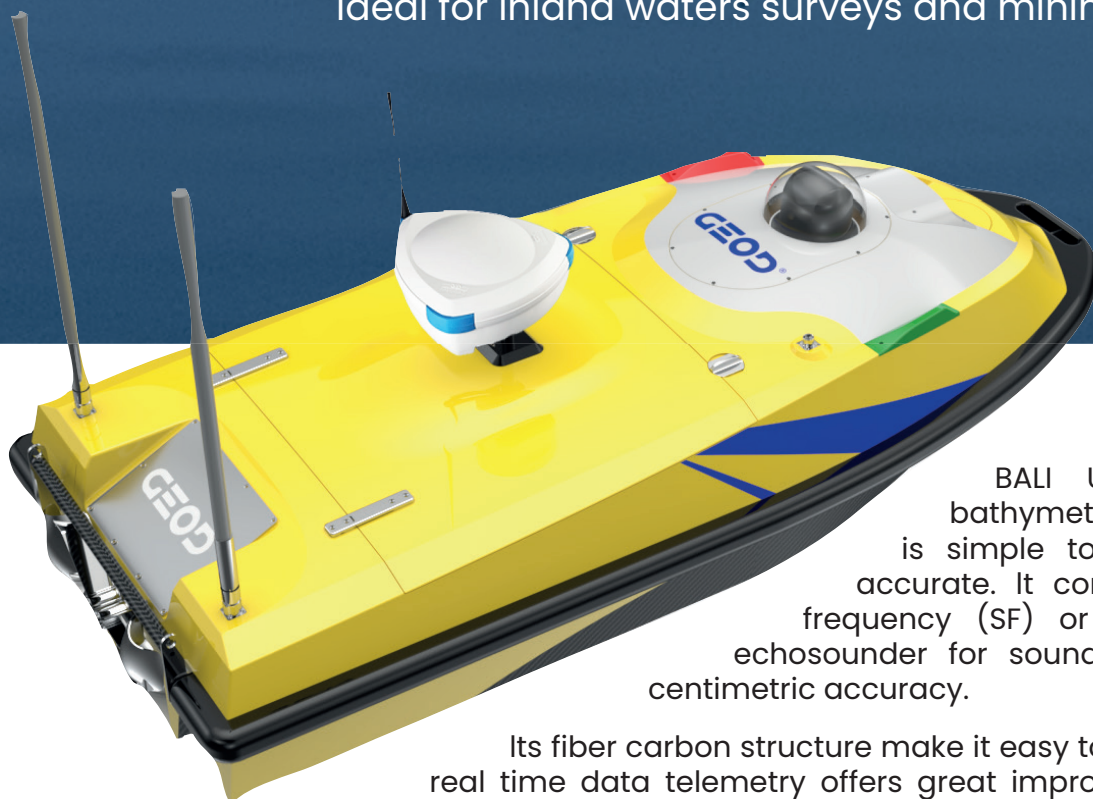


### Robust and lightweight

One surveyor can operate it

Ultra-resistant carbon fiber hull

Ideal for inland waters surveys and mining industry



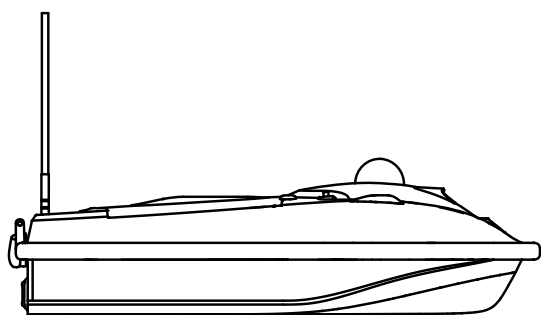
BALI USV200 is a complete bathymetric survey solution, which is simple to operate and extremely accurate. It comes with either a single frequency (SF) or a dual frequency (DF) echosounder for sounding up to 200m with a centimetric accuracy.

Its fiber carbon structure make it easy to carry. The auto-pilot and real time data telemetry offers great improvements in conducting a survey and a secure environment for the operator.

## Technical characteristics

Positioning	GPS, Glonass, Galileo and BeiDou dual-frequency RTK (1cm) – SBAS (0.5m)
Sounding* <ul style="list-style-type: none"> <li>450kHz frequency</li> <li>200kHz frequency</li> <li>30kHz frequency</li> </ul>	Range : 0,15m – 100m Accuracy: 0.2% of depth range or 2cm Angle beam : 5°  Range : 0,4m – 200m Accuracy: 0.2% of depth range or 2cm Angle beam : 9°  Range: 0,4m – 200m Accuracy: 0.2% of depth range or 2cm Angle beamw: 26°
Communication	GSM Long-range UHF (403-473MHz) Wireless LAN (2.4GHz)
I/O interface	Ethernet Wifi
User interface	Full system configuration Mission planning Real time monitoring Real time navigation Bathymetric data cleaning
Data format <ul style="list-style-type: none"> <li>Position</li> <li>Sounding</li> </ul>	Latitude, Longitude, Altitude (WGS84) Water depth (meter)
Data output	NMEA0183
Software interface	Web browser (iOS, Androïd, Windows)

\*Other configurations available on request



## USV characteristics

Hull material	Carbon fiber
Size	160 x 70 x 40cm
Weight	32kg
Draft	15cm
Engine	Hydrojet
Speed	5m/s max.
Endurance (1.5m/s speed)	6h minimum
Remote controller range	1km
Wireless base station range	2km

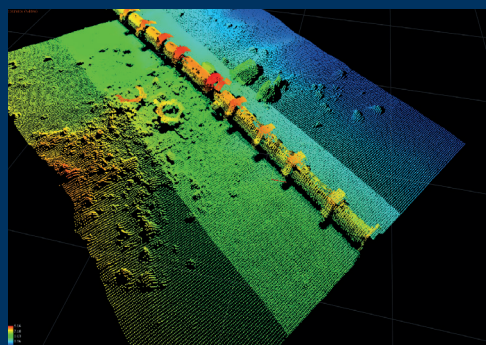
## Standard delivery

- 1 USV
- 1 rechargeable battery
- 1 wireless base station
- 1 remote controller
- 1 BALI (smart antenna + echosounder)
- 1 transit case
- 1 PTZ Camera
- 1 Collision avoidance system

## Optional delivery

- Additional batteries
- BALI stand-alone mounting kit

## USV platform is compatible with multibeam system\*



\*additional option