

# Skycross-2400



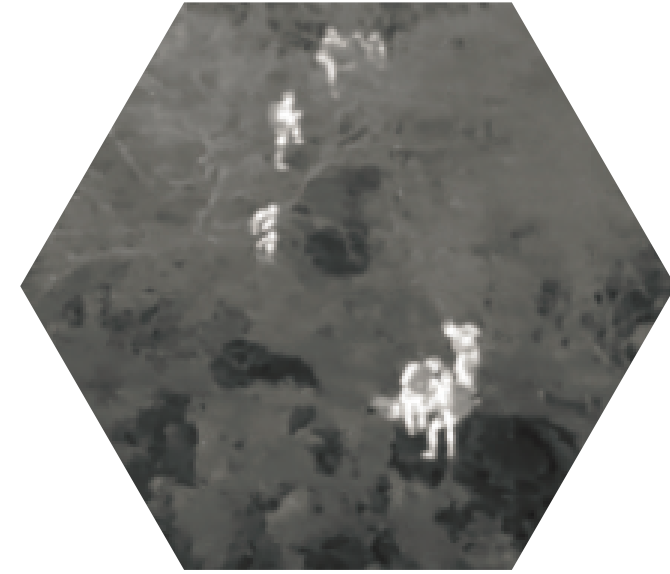
## LONG ENDURANCE VTOL DRONE



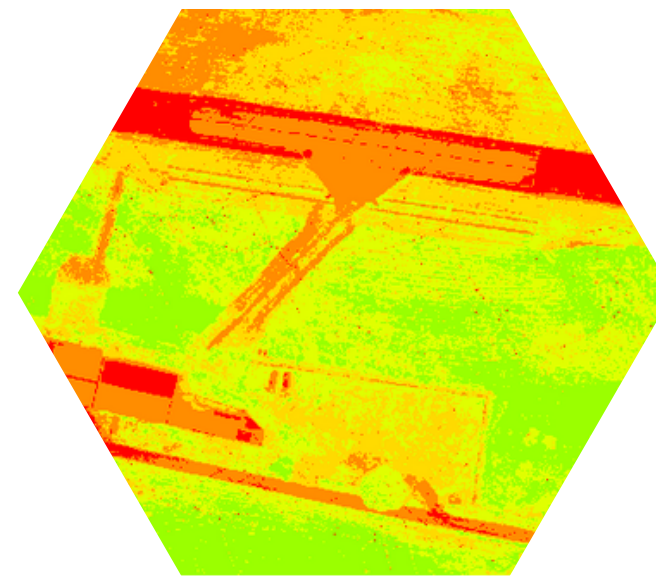
Survey and Mapping - RGB Camera  
Precision Agriculture - Multispectral Camera  
Surveillance - Thermal Camera



## SURVEY & MAPPING



## SURVEILLANCE



## ENVIRONMENTAL PROTECTION & AGRICULTURE



## MINING



## Skycross-2400 features:

- **Maximum flight autonomy:** up to 100 minutes depending on the drone's configuration and operational, environmental, and weather conditions.
- **Maximum radio range (LOS):** up to 100 km with real-time video feedback (optional).
- **LTE 3G / 4G connectivity (optional).**
- **Maximum payload capacity:** 1 kg.
- **Accuracy:** less than 5 cm with RTK or PPK, without the need for the use of targets for topographic surveys.
- **Tool-free assembly in less than a minute.**
- **Easy maintenance with availability of spare parts.**
- **Manufactured and developed in France.**

VTOL Drone 100mins Endurance RTK&PPK Multi-sensors Flexible

# Skycross-2400



## Specification :

<b>Dimensions</b>	Drone	240 (L) x 115 (I) x 30 (h) cm
	Flight case	125 (L) x 50 (I) x 45 (h) cm
<b>Weight</b>	Without Batterie	4,65 kg
	Maximum Takeoff Weight	8,5 kg
	Maximum Payload Weight	1 kg
<b>Radio Link</b>	Range	2.4Ghz - 5km
	Long Range (option)	800MHz/1.4GHz/2.4GHz Up to 100 km
		LTE (4G/3G)
<b>Batteries</b>	Number	1
	Capacity	27 000mAh
<b>Propellers</b>	Diameter	14 "
<b>Onboard GPS</b>	Constellation	GPS L1/L2, GLONASS G1/G2, BeiDou B1/B2, Galileo E1/E5b
<b>Speed</b>	Operational cruise speed	20 to 22 m/s (72 to 80km/h)
	Maximum Speed	30 m/s (110km/h)
	Wind Resistance	14 m/s (50km/h)
<b>Endurance</b>	Flight time maximum	100 mins
<b>Traveled distance</b>	Traveled distance maximum	120 km
<b>Payload</b>	Photogrammetry Camera	Sony ILX-LR1 / α7R IV 61MP
		Topodrone P61
	Multispectral Camera	MicaSence RedEdge-P
		Topodrone P61 Multispectral
Surveillance Camera	Viewpro A10TR / Z10TIR Mini	
	LiDAR	Yellowscan Mapper+ OEM
<b>Materials</b>	Frame	Carbon composite
<b>Temperature</b>	Range	-15 °C / +50 °C
<b>Service Ceiling ASL</b>	Max height ASL	4000m