

# Skycross-3400

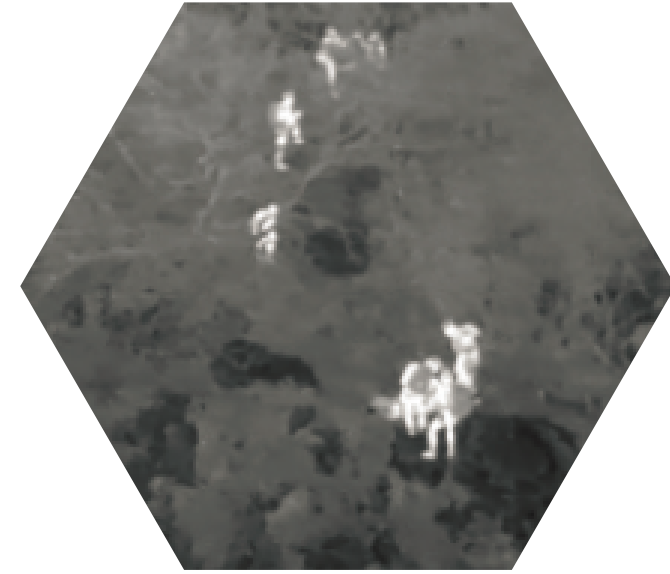


## LONG ENDURANCE VTOL DRONE

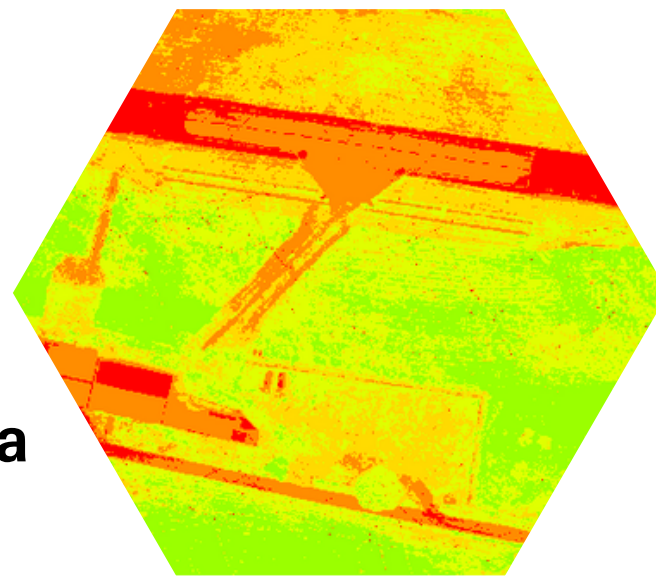


## SURVEY & MAPPING

## SURVEILLANCE



## ENVIRONMENTAL PROTECTION & AGRICULTURE



Survey and mapping by Photogrammetry- RGB Camera  
Survey and mapping by Lasergrammetry - LiDAR  
Precision Agriculture - Multispectral camera  
The Surveillance - Thermal camera

## MINING



## Skycross-3400 features:

- Maximum flight autonomy: up to 2.5 hours depending on the drone's configuration and operational, environmental, and weather conditions.
- Maximum radio range (LOS): up to 100 km with real-time video feedback (optional).
- LTE 3G / 4G connectivity (optional).
- Maximum payload capacity: 3 kg.
- Accuracy: less than 5 cm with RTK or PPK, without the need for the use of targets for topographic surveys.
- Tool-free assembly in less than a minute.
- Easy maintenance with availability of spare parts.
- Manufactured and developed in France.

**VTOL Drone 150mins Endurance RTK&PPK Multi-sensors Flexible**



# Skycross-3400



<b>Dimensions</b>	Drone	338 (L) x 150 (l) x 50 (h) cm
	Flight case	134 (L) x 58 (l) x 45 (h) cm
<b>Weight</b>	Without Batterie	9,5 kg
	Maximum Takeoff Weight	18 kg
	Maximum Payload Weight	3 kg
<b>Radio Link</b>	Standard Range (LOS)	2.4Ghz - 5km
	Long Range (option/LOS)	800MHz/1.4GHz/2.4GHz 100 km
		LTE (3G/4G)
<b>Batteries</b>	Number	2
	Capacity	30 000mAh
<b>Propellers</b>	Diameter	22 "
<b>Onboard GPS</b>	Constellation	GPS L1/L2, GLONASS G1/G2, BeiDou B1/B2, Galileo E1/E5b
<b>Speed</b>	Operational cruise speed	20 to 23 m/s (72 to 82km/h)
	Maximum Speed	33 m/s (120km/h)
	Wind Resistance	14 m/s (50km/h)
<b>Endurance</b>	Flight time maximum	150 mins
<b>Traveled distance</b>	Traveled distance maximum	200 km
<b>Payload</b>	Photogrammetry Camera	Sony ILX-LR1/α7R IV 61MP
		Topodrone P61 61MP
	Multispectral Camera	Topodrone P61 Multispectral
		MicaSence RedEdge-P
	Surveillance Camera	Viewpro H30T, A40T
	LiDAR	YellowScan Mapper+ / Surveyor Ultra V3 with camera
Topodrone LiDAR 200+		
<b>Materials</b>	Frame	Carbon composite
<b>Temperature</b>	Range	-15 °C / +50 °C
<b>Service Ceiling ASL</b>	Max height ASL	4000m