

Skycross-2400



LONG ENDURANCE VTOL DRONE



Survey and Mapping - RGB Camera
Precision Agriculture - Multispectral Camera
Surveillance - Thermal Camera

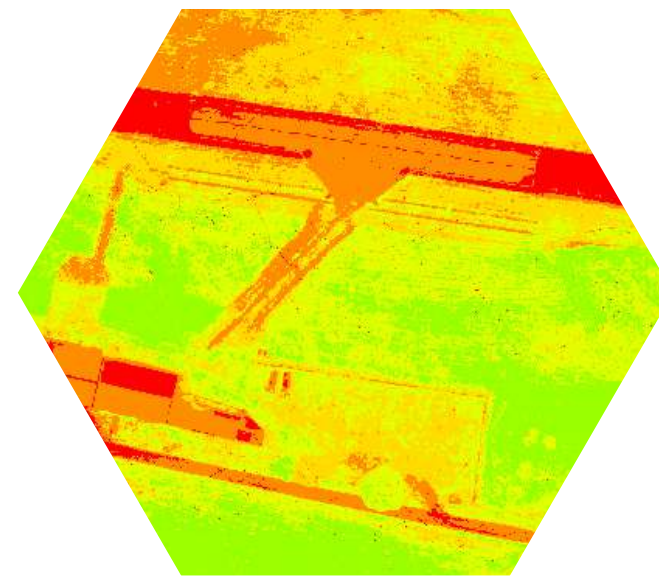


SURVEY & MAPPING

SURVEILLANCE



**ENVIRONMENTAL
PROTECTION &
AGRICULTURE**



MINING



Skycross-2400 features:

- **Maximum flight autonomy:** up to 100 minutes depending on the drone's configuration and operational, environmental, and weather conditions.
- **Maximum radio range (LOS):** up to 100 km with real-time video feedback (optional).
- **LTE 3G / 4G connectivity (optional).**
- **Maximum payload capacity:** 1 kg.
- **Accuracy:** less than 5 cm with RTK or PPK, without the need for the use of targets for topographic surveys.
- **Tool-free assembly in less than a minute.**
- **Easy maintenance with availability of spare parts.**
- **Manufactured and developed in France.**

VTOL Drone 100mins Endurance RTK&PPK Multi-sensors Flexible

Skycross-2400



Specification :

Dimensions	Drone	240 (L) x 115 (l) x 30 (h) cm
	Flight case	125 (L) x 50 (l) x 45 (h) cm
Weight	Without Batterie	4,65 kg
	Maximum Takeoff Weight	8,5 kg
	Maximum Payload Weight	1 kg
Radio Link	Range	2.4Ghz - 5km
	Long Range (option)	800MHz/1.4GHz/2.4GHz Up to 100 km
		LTE (4G/3G)
Batteries	Number	1
	Capacity	27 000mAh
Propellers	Diameter	14 "
Onboard GPS	Constellation	GPS L1/L2, GLONASS G1/G2, BeiDou B1/B2, Galileo E1/E5b
Speed	Operational cruise speed	20 to 22 m/s (72 to 80km/h)
	Maximum Speed	30 m/s (110km/h)
	Wind Resistance	14 m/s (50km/h)
Endurance	Flight time maximum	100 mins
Traveled distance	Traveled distance maximum	120 km
Payload	Photogrammetry Camera	Sony ILX-LR1 / α7R IV 61MP
		Topodrone P61
	Multispectral Camera	MicaSence RedEdge-P
		Topodrone P61 Multispectral
Surveillance Camera	Viewpro A10TR / Z10TIR Mini	
	LiDAR	Yellowscan Mapper+ OEM
Materials	Frame	Carbon composite
Temperature	Range	-15 °C / +50 °C
Service Ceiling ASL	Max height ASL	4000m