

Skycross-4100



LONG ENDURANCE VTOL DRONE

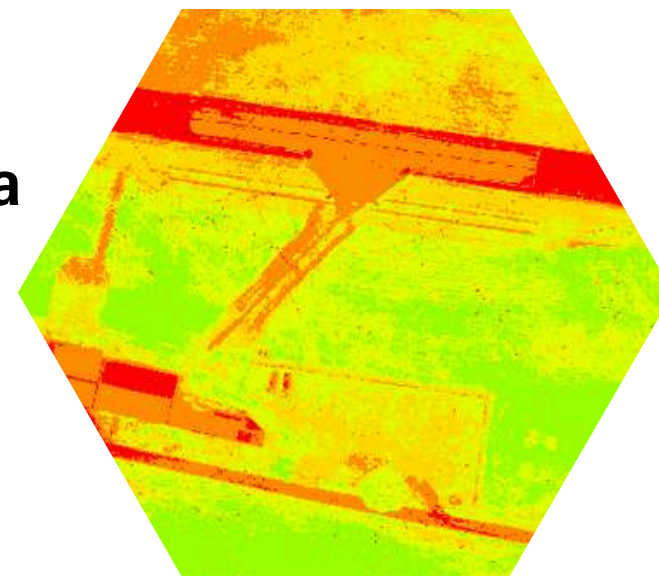


SURVEY & MAPPING

SURVEILLANCE



Survey and mapping by Photogrammetry- RGB Camera
Survey and mapping by Lasergrammetry - LiDAR
Precision Agriculture - Multispectral camera
The Surveillance - Thermal camera
Transportation - Goods Delivery



ENVIRONMENTAL PROTECTION & AGRICULTURE

DELIVERY



MINING



Skycross-4100 features

- **Maximum flight autonomy:** up to 2.5 hours depending on the drone's configuration and operational, environmental, and weather conditions.
- **Maximum radio range (LOS):** up to 100 km with real-time video feedback (optional).
- **LTE 3G / 4G connectivity (optional).**
- **Maximum payload capacity: 9 kg.**
- **Accuracy:** less than 5 cm with RTK or PPK, without the need for the use of targets for topographic surveys.
- **Tool-free assembly in less than a minute.**
- **Easy maintenance with availability of spare parts.**
- **Manufactured and developed in France.**

VTOL Drone 2.5h Endurance RTK&PPK 9kg Payload Flexible

Skycross-4100



Dimensions	Drone	415 (L) x 195 (l) x 75 (h) cm
	Flight case	158 (L) x 65 (l) x 77 (h) cm
Weight	Without Batterie	15,5 kg
	Maximum Takeoff Weight	36 kg
	Maximum Payload Weight	9 kg
Radio Link	Range (LOS)	2.4GHz - 5km
	Long Range (option/LOS)	800MHz/1.4GHz/2.4GHz - 100 km
		LTE (4G/3G)
Batteries	Number	4
	Capacity	30 000mAh
Propellers	Diameter	26 "
Onboard GPS	Constellation	GPS L1/L2, GLONASS G1/G2, BeiDou B1/B2, Galileo E1/E5b
Speed	Operational cruise speed	24 to 29 m/s (86 to 104km/h)
	Maximum Speed	33 m/s (120km/h)
	Wind Resistance	15 m/s (54km/h)
Endurance	Maximum flight time	150 mins
Distance	Maximum traveled distance	220km
Payload	Photogrammetry Camera	Sony ILX-LR1/α7R IV 61MP Topodrone P61 61MP
	Oblique Camera	Share UAV 102S / 202S / 303S
	Multispectral Camera	Topodrone P61 Multispectrale MicaSence RedEdge-P
	Surveillance Camera	Viewpro A40TR Pro A30TR-50, Octopus E180MG
	Delivery box	Parachute delivery or Automatic landing
	LiDAR	YellowScan Explorer/ Voyager
Materials	Frame	Carbon composite
Temperature	Range	-10 °C / +50 °C
Service Ceiling ASL	Max height ASL	4000m