



SKYCROSS-3000

The Skycross 3000 is a high-performance and long-endurance VTOL drone.

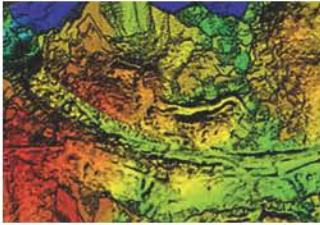
Featuring CE certification, a C6-class rating and compliance with EASA standards, it is designed to enhance mining operations through advanced aerial data collection.

Combining the efficiency of fixed-wing flight with the versatility of vertical takeoff and landing, the Skycross 3000 is ideal for surveying, surveillance, inspection, delivery and rescue operations in complex mining environments.



-  Customized training
-  Commitment to quality
-  Responsiveness and expertise
-  Environmental stewardship

Technical characteristics



SURVEY & MAPPING



SURVEILLANCE



DELIVERY & RESCUE



MINE DETECTION & EXPLORATION

Dimensions Drone	299 (L) x 150 (l) x 50 (h) cm
Flight case dimensions	120 (L) x 65 (l) x 50 (h) cm
Max take-off weight	19 kg
Maximum payload weight	3.5 kg
Standard radio	20 km 2.4Ghz et 5.8Ghz
Long-range radio	100km with video feedback
Telem and video communication	Antijamming French
LTE / GSM communication	3G / 4G / 5G
Integrated PPK/RTK GNSS constellation	GPS L1/L2, GLONASS G1/G2, BeiDou B1/B2, Galileo E1/E5b
GNSS GPS Antijamming - Thales	ScaleFlyt Antijamming
Thales ScaleFlyt (option)	Antijamming French
Cruising speed	18 à 24 m/s (65 à 86km/h)
Max speed	35 m/s (126km/h)
Flight time	between 2 and 2.5 hours depending on the option
Wind resistance	15 m/s (54 km/h) 30 kn
Max height ASL	4500 m
Structure	Composite / carbon fiber
Temperature Deviation	-10 °C / +50 °C
Quick assembly	Less than 3 minutes
Quickly interchangeable payload	Locking slide system
Redundancy	2 x pitot (air speed) 3 x Compas 2 x GPS Gnss

